

[UPDATED 2022 98-365 dumps Free Test Engine Verified By Certified Experts
[Q86-Q103]



[UPDATED 2022] 98-365 dumps Free Test
Engine Verified By Certified Experts [Q86-Q103]

[UPDATED 2022] 98-365 dumps Free Test Engine Verified By Certified Experts
Realistic 98-365 Accurate & Verified Answers As Experienced in the Actual Test!

Conclusion

Obtaining the MTA: Windows Server Administration Fundamentals certification and climbing another step up to a job that meets all your needs and expectations is not that difficult. Just set a goal, find the exam objectives, study the skills outline, and start your preparation now using only reliable materials for the Microsoft 98-365 exam. You have gotten the hang of things!

NEW QUESTION 86

Disk mirroring occurs when data is:

- * Duplicated on the same disk.
- * Backed up by using parity.

- * Duplicated on separate disks.
- * Split between disks.

Explanation/Reference:

Explanation:

NEW QUESTION 87

The manager at the coffee house where you work asks for advice on adding storage to the store's server to perform backups.

The additional storage must meet the following requirements:

Hold at least 600 GB

▪

Be reasonably priced

▪

Be reasonably fast

▪

Which solution should you recommend?

- * USB hard drive
- * USB flash drive
- * SCSI tape backup system
- * External SCSI hard drive

Explanation/Reference:

Explanation:

USB hard drives have higher capacity than USB flash drives.

USB hard drives are faster and cheaper than a SCSI tape backup system.

USB hard drives are cheaper than external SCSI hard drives.

NEW QUESTION 88

Which technology is used to create and manage relational databases?

- * Microsoft Exchange Server
- * Microsoft Commerce Server
- * Microsoft Groove Server
- * Microsoft SQL Server

NEW QUESTION 89

What Windows server attached to a domain is not a domain controller?

- * member server
- * bridgehead server
- * LDAP server
- * Kerberos server

Section: Understanding Active Directory

Explanation:

A server that is not running as a domain controller is known as a member server.

To demote a domain controller to a member server, you rerun the dcpromo program.

NEW QUESTION 90

You work as a Server Administrator for company Inc. The company has a Windows 2008 based network environment. There is a domain controller with Windows Server 2008 R2 installed on it. You want to install the Hyper-V role for production server consolidation and business continuity management. Which of the following are the prerequisites for installing the Hyper-V role? Each correct answer represents a complete solution. Choose all that apply.

- * x32-based processor
- * GUI accelerator
- * Hardware-assisted virtualization
- * Hardware-enforced Data Execution Prevention
- * x64-based processor

NEW QUESTION 91

Disk striping occurs when data is:

- * Duplicated on separate disks
- * Duplicated on the same disk
- * Shared between disks
- * Written across multiple disks

Explanation/Reference:

Explanation:

NEW QUESTION 92

Which task is executed during the Power-On Self Test (POST)?

- * The amount of system RAM is detected.
- * The Master Boot Record is created.
- * The operating system is initialized.
- * Disk file systems are detected.

NEW QUESTION 93

_____ allows users to retrieve previous versions of files and folders on their own.

- * Shadow Copies
- * Share Folder
- * Backup
- * Off Line Folder

Shadow copies allow users to retrieve previous versions of files and folders on their own, without requiring IT personnel to restore files or folders from backup media. Of course, you need to have sufficient disk space to store the shadow copies, at least 100 MB of free space.

NEW QUESTION 94

What is the minimum amount of RAM needed to install Windows Server 2008 R2?

- * 256 MB
- * 512 MB
- * 1 GB
- * 2 GB

Before installing Windows Server 2008 R2 software, look at the system requirements, which includes one 64-bit 1.4 GHz processor or better and 512 MB of RAM. Of course, for decent performance, you need much more than that.

NEW QUESTION 95

What system is used to translate www.microsoft.com to an IP address?

- * DNS
- * WINS
- * DHCP
- * ARP

Explanation/Reference:

Explanation:

Domain Name System (DNS) is a hierarchical client/server-based distributed database management system that translates domain/hosts names to IP addresses.

Your organization most likely has one or more DNS servers that provide name resolution for your company.

NEW QUESTION 96

What type of driver is tested and includes a digital certificate?

- * published
- * certified
- * compliant
- * signed

Section: Understanding server installation

Explanation:

A signed device driver includes a digital signature, which is an electronic security mark that can indicate the software publisher and information that can show whether a driver has been altered. When Microsoft signs it, the driver has been thoroughly tested to ensure that it will not cause problems with the system's reliability or cause a security problem.

NEW QUESTION 97

Which technology is designed to host calendars, contacts, and e-mail on the server?

- * Microsoft Host Integration Server
- * Microsoft Expression Studio

- * Microsoft SQL Server
- * Microsoft Exchange Server

NEW QUESTION 98

Which tool would you use to retrieve detailed information about a significant occurrence in a computer system?

- * Event Viewer
- * System Information
- * System Monitor
- * Resource Monitor

NEW QUESTION 99

You turn on a computer.

What happens first?

- * The operating system is loaded.
- * The boot sector is accessed.
- * The BIOS is loaded.
- * The Master Boot Record (MBR) is accessed.

NEW QUESTION 100

What program allows you to view and interact with a user's sessions while a user is showing an error?

- * Remote Desktop
- * Remote Assistance
- * Control Panel
- * SysInfo

Remote Assistance is designed for support personnel to connect to an active logon session to assist or troubleshoot a problem.

Unlike Remote Desktop, Remote Assistance allows the user to interact with the current session, including seeing the same computer screen.

NEW QUESTION 101

Which two are Windows Server Cluster types? (Choose two.)

- * Shared storage
- * Failover
- * Network Load Balancing (NLB)
- * Shared services

Section: Understanding server maintenance

Explanation:

The difference between NLB and Windows Failover Cluster.

- * An NLB array allows load to be spread NLB and Windows Failover Cluster.
- * A failover cluster provides high availability and redundancy, but doesn't spread the load. Only one server is live at any time, but the clustered application(s) can be moved to the other server very quickly.

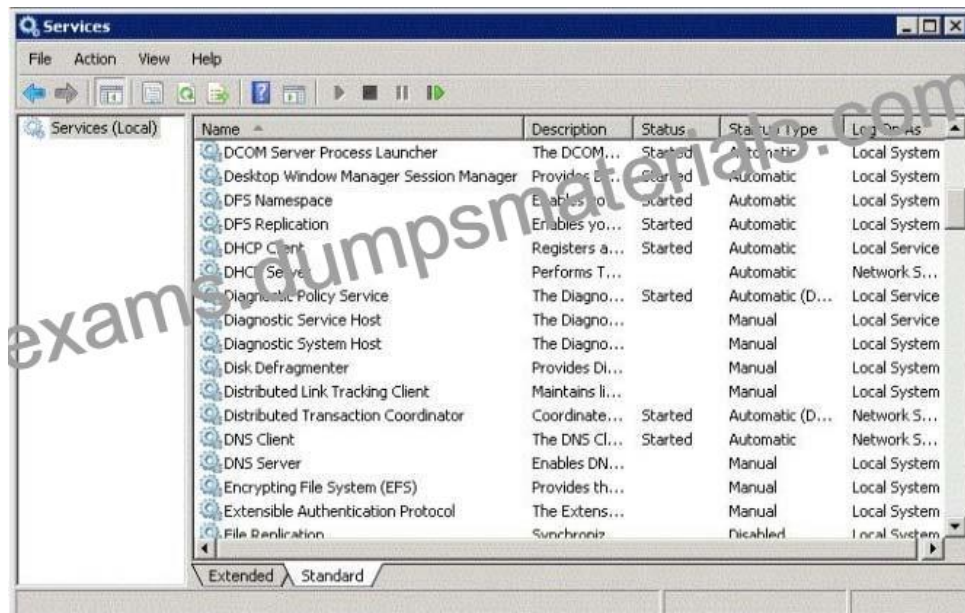
NEW QUESTION 102

HOTSPOT

You restart the Windows Server 2008 R2 server for your computer lab.

After the restart, a workstation cannot connect to any local network resource. Other workstations in the lab can connect to local network resources, but cannot browse the Internet.

The Services console is shown in the following image:



Use the drop-down menus to select the answer choice that completes each statement. Each correct selection is worth one point.

Hot Area:

Answer Area

Changing the status of the DHCP Server service to **[answer choice]** allows the users to receive working IP addresses.

Setting the DNS Server service startup type to **[answer choice]** restores name resolution services when the server is rebooted.

Answer Area

Changing the status of the DHCP Server service to **[answer choice]** allows the users to receive working IP addresses.

Setting the DNS Server service startup type to **[answer choice]** restores name resolution services when the server is rebooted.

Explanation/Reference:

The DHCP service need to be started.

▪

The DHCP service startup type should be Automatic.

▪

NEW QUESTION 103

What type of environment has each computer keep its own security database?

- * workgroup
- * domain
- * conglomerate
- * association

By default, a computer is part of a workgroup. A workgroup is usually associated with a peer-to- peer network in which user accounts are decentralized and stored on each individual computer.

Microsoft 98-365: Requirements

The typical audience for the Microsoft 98-365 exam is those individuals who are already familiar with the technologies and concepts of Windows Server Administration. The candidates for this test are strongly recommended to possess practical experience with Windows Server, account management, Active Directory, system recovery concepts and tools, and Windows-based networking. There are no other official prerequisites for taking this certification exam. The students do not need to hold any extra certificates or undertake specific training.

Latest Microsoft 98-365 Practice Test Questions: <https://www.dumpsmaterials.com/98-365-real-torrent.html>]