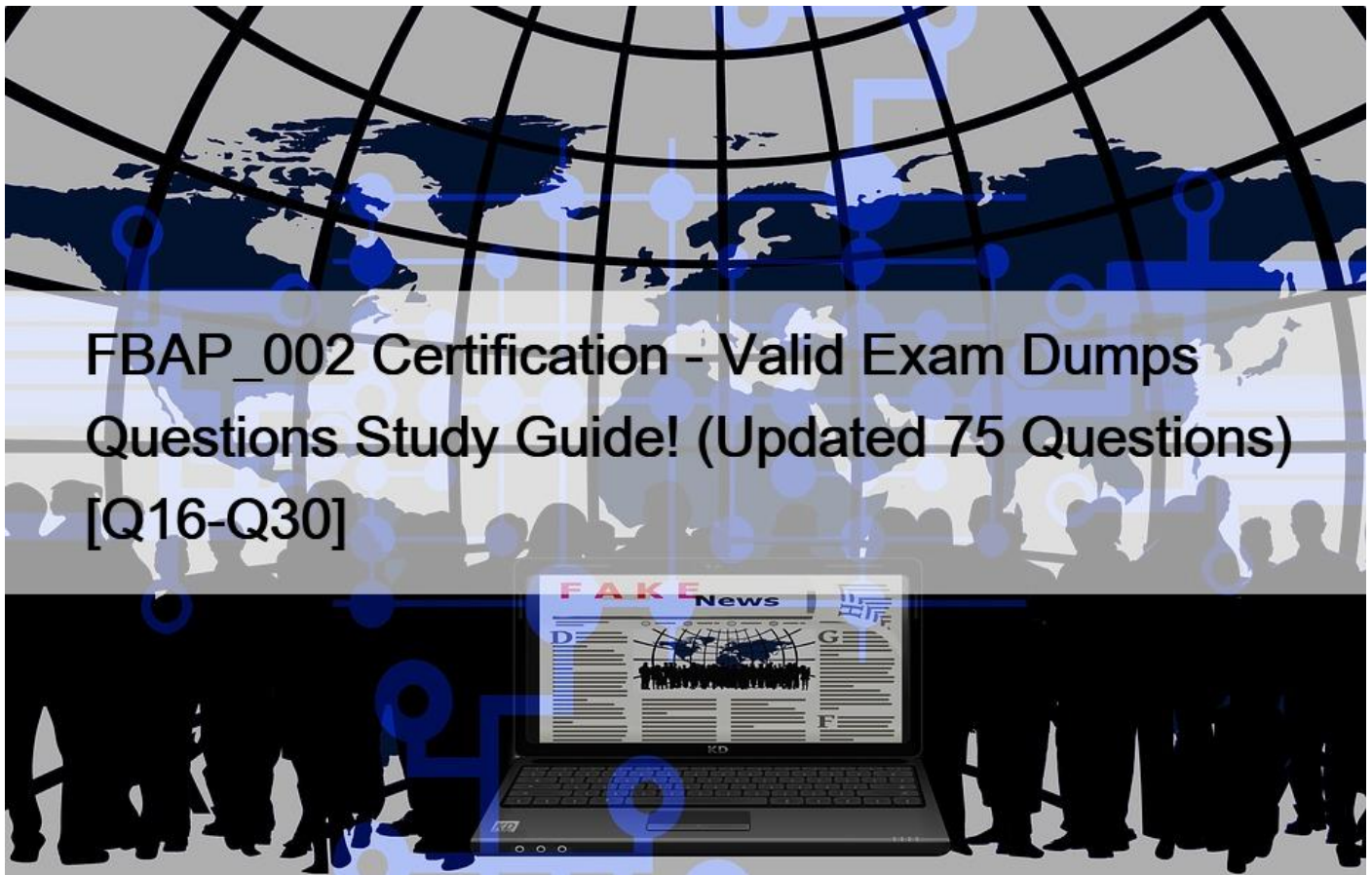


## FBAP\_002 Certification - Valid Exam Dumps Questions Study Guide! (Updated 75 Questions) [Q16-Q30]



FBAP\_002 Certification &ndash; Valid Exam Dumps Questions Study Guide! (Updated 75 Questions)  
FBAP\_002 Dumps are Available for Instant Access using DumpsMaterials

### Pure Storage FBAP\_002 Exam Syllabus Topics:

TopicDetailsTopic 1- Determine workflows and anticipate developments to efficiently utilize the scale-out architecture- Determine an appropriate FlashBlade configuration given a scenarioTopic 2- Map a customer use case to an appropriate class of storage- Identify use-cases where FlashBlade will be successfulTopic 3- Determine customer side capacity and performance requirements- Identify environmental hardware, software and logistic dependencies

**Q16.** A customer is developing a AI workflow that Ingests sensor data to FlashBlade NFS from its cloud edge collection point for furthers analysis.

The customer&#8217;s HPC cluster mounts NFS to train the data but S3 to label.

Which challenge will the architect experience with this design?

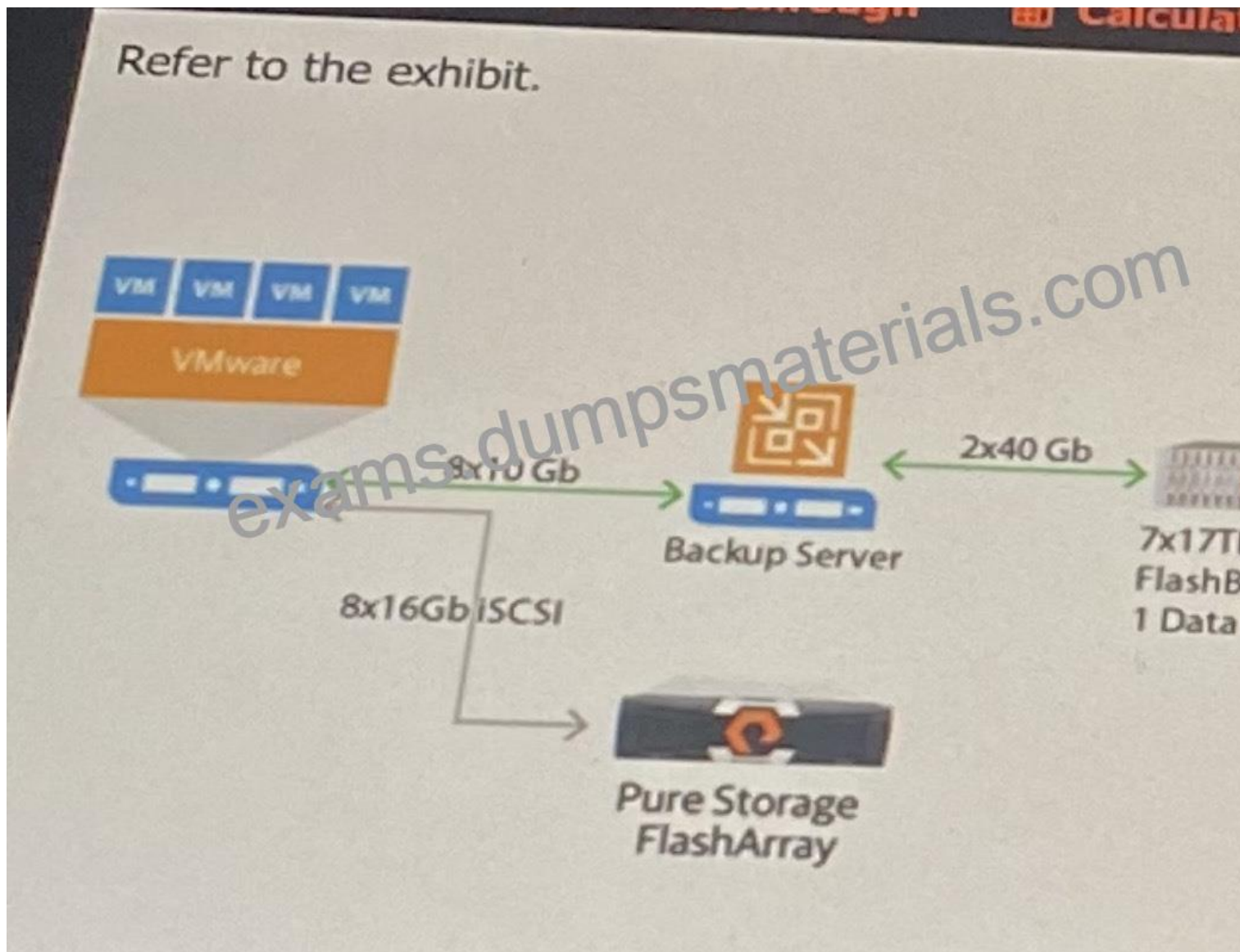
\* NFS and S3 are NOT a shared namespace. \*\*\*

- \* NFS and S3 must use different data VIPs.
- \* NFS and S3 cannot be enabled concurrently.
- \* NFS and S3 cannot share export rules.

**Q17.** How many rack units (Rus) of space are required to support a multi-chassis FlashBlade with 40 blades?

- \* 18 Rus
- \* 14 Rus \*\*\*
- \* 12 Rus
- \* 9 Rus

**Q18.**



A customer decides to use S3 as a protocol between the Backup Server to FlashBlade. The Backup Application S3 client is multi-threaded. What is the expected maximum restore throughput?

- \* ~10Gb/s
- \* ~80Gb/s \*\*\*

- \* ~70Gb/s
- \* ~20Gb/s

**Q19.** A customer is standing up a new 30x17TB FlashBlade system.

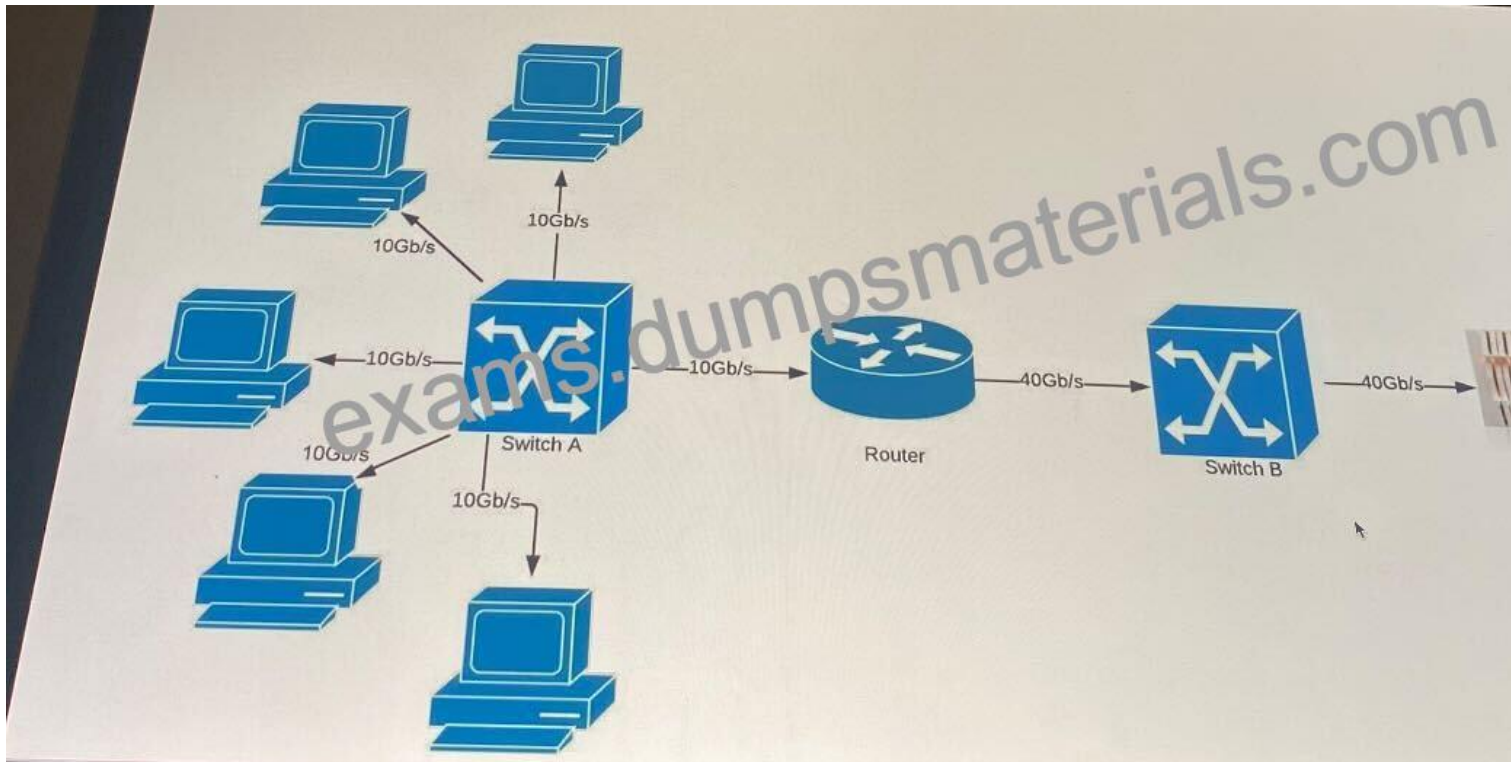
The customer's environment is as follows:

1. The upstream switches are located 50 feet away
2. The upstream switches have the required number of 100Gb/s interfaces.
3. The customer is conscious about data availability.
4. The customer requires the use of 4 LAGs

What is the minimum number of cables required?

- \* 4 passive QSFP + to QSFP + cables
- \* 8 passive QSFP + to QSFP + cables
- \* 4 active QSFP + to QSFP + cables
- \* 8 active QSFP + to QSFP + cables \*\*\*

**Q20.**



The customer reports that the end clients shown in the diagram are NOT completing jobs on time. Each client writes 300MB/s to the FlashBlade for 45 minutes every hour, and they run concurrently. What does the architect need to do?

- \* Increase the number of DataVIPs available to the clients.

- \* Add additional mount point on each client.
- \* Increase bandwidth between Switch A and the Router.
- \* Stagger the job start times between the clients. \*\*\*

**Q21.** A retail customer is designing a new application that will train an AI algorithm with metadata from purchase transactions.

The customer has the following constraints:

- Billions of transactions per hour
- Hundreds of thousands of clients
- Easily connect and disconnect from many network locations
- Asymmetric encryption across a WAN
- Resilience to network latency

Which protocol should the architect recommend?

- \* NFS v3
- \* NFS v4.1 \*\*\*
- \* SMB
- \* S3

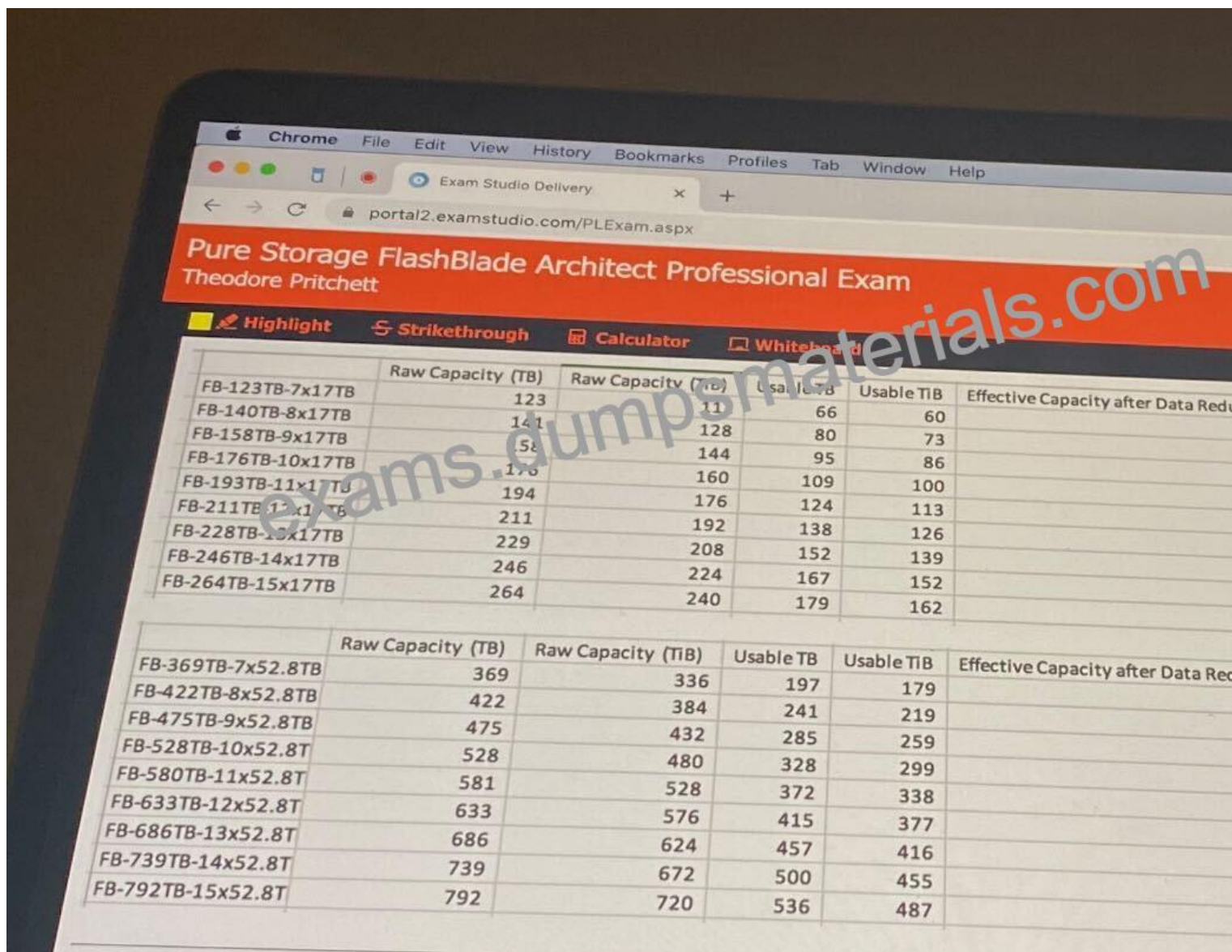
**Q22.** A customer is adding snapshot policies so that some file systems can be tiered based on importance to the business.

- 1 file system with high priority
- 3 file systems with medium priority
- 2 file systems with low priority

How many snapshot policies does the customer need to protect all of their file systems?

- \* 3 \*\*\*
- \* 1
- \* 6
- \* 4

**Q23.**



An architect need to create capacity sizing of FlashBlade to move data from a 6-year old EMC-Dell Isilon. The current Isilon solution consumes almost 1.3PB. There are three workloads:

-Warehouse application (40 TB, estimated compression ratio 2:1, IO size 8K)

-Images (20 TB, estimated compression ratio 1.0:1 average image size 1M)

-Log files (40 TB, estimated compression ratio 4:1, average file size 4k) What is the required FlashBlade configuration?

- \* 7x17TB blades \*\*\*
- \* 15x17TB blades
- \* 15x52TB blades
- \* 42x52TB blades

**Q24.** A customer is a heavy Windows user and generally uses SMB for everything, including backups. The customer wants to refresh the storage used within their backup environment. The customer is using Commvault for the backup software.

Which protocol should the architect recommend?

- \* SMB \*\*\*
- \* NDMP \*\*\*
- \* S3
- \* NFS

**Q25.** A company has a datacenter with a lot of electromagnetic interference. Their switches are 9m away from the FlashBlade and do NOT support speed faster than 10Gb/s.

Which cable should the architect use?

- \* Shielded ethernet cable. \*\*\*
- \* Passive Twinax cable.
- \* Fiber optic cable.
- \* Active Twinax cable.

**Q26.** A FlashBlade is designed with a properly implemented single 4x40Gb/s LAG.

During implementation, the architect is informed that the ISL on the uplink switches is broken. The customer has no budget to repair or replace it. What should the architect do?

- \* Divide the single LAG into one LAG per switch. \*\*\*
- \* Change out the 40Gb/s cable for breakout cable.
- \* Using the same LAG, create a second subnet and VIP.
- \* Remove all uplink from FM2.

**Q27.** What is the support speed of the out-of-bound management port?

- \* 100Mb/s
- \* 10Gb/s
- \* 1Gb/s \*\*\*
- \* 10Mb/s

**Q28.** What type of network connection load balancing does FlashBlade use?

- \* ECMP (Equal Cost Multipathing) \*\*\*
- \* DNS (Round Robin)
- \* BGP (Border Gateway Protocol)
- \* Sticky Session (Session Persistence)

**Q29.** A customer has an application that stores GIS data in an S3 repo. For compliance reasons, the GIS data that existed at a previous point in time may need to be accessed.

What should the architect do?

- \* Enable object versioning \*\*\*
- \* Take periodic snapshots
- \* Replicate the older objects
- \* Back up the GIS data regularly

**Q30.** What is the recommended number of power cables for a multi-chassis FlashBlade configuration with 4 chassis?

- \* 16 power cables
- \* 18 power cables
- \* 20 power cables \*\*\*
- \* 22 power cables

**Pure Storage FBAP\_002 Exam Practice Test Questions:** [https://www.dumpsmaterials.com/FBAP\\_002-real-torrent.html](https://www.dumpsmaterials.com/FBAP_002-real-torrent.html)