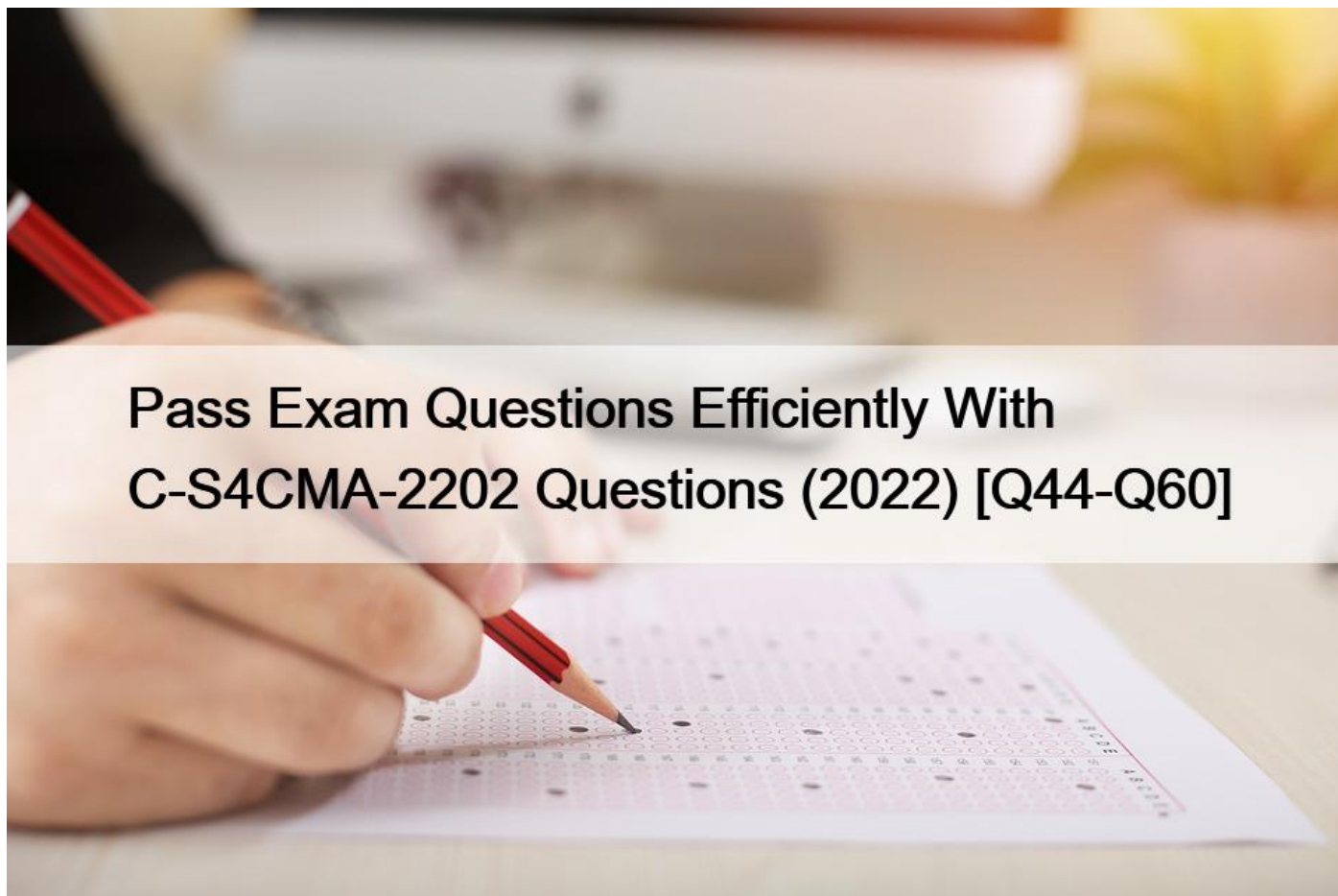


Pass Exam Questions Efficiently With C-S4CMA-2202 Questions (2022) [Q44-Q60]



Pass Exam Questions Efficiently With C-S4CMA-2202 Questions (2022)

C-S4CMA-2202 Questions - Truly Beneficial For Your SAP Exam

SAP C-S4CMA-2202 Certification Exam Topics:

Topic Areas Topic Details, Courses, Books **Data Migration < 8%** Identify Self-Service Configuration UIs for data migration, prepare data migration, perform data migration, and describe best practices for managing data migration between release lifecycles. -

S4C01e **SAP Activate Methodology and Best Practices 8% - 12%** Describe the SAP Activate Implementation Methodology, best practices and Content Lifecycle Management for RISE with SAP S/4HANA Cloud (public). - S4C01e **SAP S/4HANA Cloud (public) - Manufacturing Overview < 8%** Describe the RISE with SAP strategy and the solution scope of SAP S/4HANA Cloud (public) in general for the Manufacturing solution and innovations. S4CP01 (2021 (OP) AND 2202 (CLOUD)) -

S4C40e **Scope Item Level Implementation and Configuration for Quality Management > 12%** Configure the Best Practices scenario Quality Management of Internal Problems (2QP), Defects Management (2QN), and Quality Management in Discrete Manufacturing (1E1). - S4C40e **Configuration and Reporting 8% - 12%** Identify the implementation phases and scope and perform key Guided Configuration; describe Expert Configuration; explain SAP Cloud Platform Identity Authentication Service; perform core user management in SAP S/4HANA Cloud; and identify Key Solution configuration settings for integration. -

S4C01e **Integration and Extensibility < 8%** Define extensions and integrations in SAP S/4HANA Cloud following best practices. - S4C01e **Scope Item Level Implementation and Configuration for Basic Production Processing > 12%** Configure

the Best Practices scenario Manufacturing with KANBAN Supply into Production (1E3), Production Subcontracting - External Processing (BJK), Make-to-Order Production - Semifinished Goods Planning and Assembly (1BM), Predictive Analytics for Stock in Transit in Warehouse Management (20N), Rework Processing - Stock-Manufactured Material (BJN), Analytics for Production Unit: Plan/Actual Production Cost (2QW)?, and Rework Processing - Work-in-Process (BJQ). - S4C40e

SAP C-S4CMA-2202 Exam Description:

The "SAP Certified Application Associate - SAP S/4HANA Cloud (public) - Manufacturing Implementation" certification exam validates that the candidate possesses SAP Activate onboarding fundamentals and core knowledge in the Manufacturing line of business area required of the consultant profile. This certification proves that the candidate has an overall understanding and in-depth technical skills to participate as a member of a RISE with SAP S/4HANA Cloud (public) implementation project team with a focus on Manufacturing in a mentored role. This certification exam is recommended as an entry level qualification.

Please note that this 2202 version of the exam takes part in the Stay Current with SAP Global Certification program. Once you pass this version of the exam, make sure that you start your stay current process. You will be required to take the Stay Current Assessment for all subsequent major releases via the SAP Learning Hub starting with the 2208 release to maintain your SAP S/4HANA Cloud (public) consultant certification status and badge. NOTE that Stay Current is moving to a bi-yearly cadence starting in 2022. In order to participate in the Stay Current program and access the Stay Current enablement and assessment, you will need at minimum an SAP Learning Hub, edition for SAP S/4HANA Cloud subscription. (link URL > <https://training.sap.com/learninghub>)

NEW QUESTION 44

What is a Learning Journey?

- * A how-to guide for process tutorials in the My Learning app
- * A guided tour embedded in SAP S/4HANA Cloud
- * A document that describes your experience during the onboarding process to SAP S/4HANA Cloud
- * A role-based collection of learning assets for a specific topic

NEW QUESTION 45

How can you change the default testing values for a process step when using the test automation tool for SAP S/4HANA Cloud?

- * By using a self-service customizing (SSC) UI
- * By importing the values from another test plan
- * By adding a variant
- * By creating a new test plan

NEW QUESTION 46

Which of the following business priorities of SAP S/4HANA Cloud was presented in this unit ‘Digital Order and Contract Management’?

- * Accelerated Plan to Product
- * Core Finance
- * Optimized Order to Cash
- * Streamlined Procure to Pay

NEW QUESTION 47

What is the right sequence of steps for an SAP S/4HANA Cloud upgrade?

- * Q system upgrade test phase P system upgrade
- * P system upgrade Q system upgrade test phase
- * Test phase Q system upgrade P system upgrade
- * Q system upgrade P system upgrade test phase

NEW QUESTION 48

Which of the following systems are part of a two-system SAP S/4HANA Cloud landscape?

Note: There are 2 correct answers to this question.

- * Quality system (Q)
- * Test system (T)
- * Development system (D)
- * Production system (P)

NEW QUESTION 49

What is the service-level agreement (SLA) on corrective action for priority 1 incidents?

- * 6 hours, real time
- * 6 hours, office hours
- * 4 hours, office hours
- * 4 hours, real time

NEW QUESTION 50

Our Machine Learning use case is an example of which value lever dimension?

- * Increase agility
- * Assimilate process innovation
- * Increase efficiency
- * Increase effectiveness

NEW QUESTION 51

Which of the following are activities in an SAP S/4HANA Cloud implementation that require key users' involvement?

Note: There are 3 correct answers to this question.

- * End-user training and onboarding
- * Cloud subscription fees monitoring
- * Accounts payable clearing
- * System personalization and configuration
- * Solution discovery

NEW QUESTION 52

Which of the following are capabilities of master data management in SAP S/4HANA Cloud?

Note: There are 3 correct answers to this question.

- * Mass processing

- * Master data consolidation
- * Master data prediction
- * Master data remediation
- * Master data modeling

NEW QUESTION 53

Which of the following tools are used during the Realize phase of an SAP S/4HANA Cloud deployment?

Note: There are 3 correct answers to this question.

- * Test Tool
- * Implementation Guide (IMG)
- * Product Availability Matrix
- * Migration Cockpit
- * Manage Your Solution Application

NEW QUESTION 54

How many upgrades of your SAP S/4HANA Cloud system are you allowed to skip?

- * Two
- * Three
- * None
- * One

NEW QUESTION 55

What do S/4HANA Cloud and S/4HANA on-premise has in common?

- * They run on the same upgrade schedule
- * The adoption of new innovations provided by SAP requires a similar time and efforts
- * They share the same scope
- * They are built from one single code line

NEW QUESTION 56

Which of the following tasks can you perform on an Analytical List page?

- * Dig into KPIs, Overview pages, and transactions.
- * Modify the data models.
- * Define KPIs.
- * Create and manage analytical queries.

NEW QUESTION 57

Which of the following statements regarding customer-driven integration is true?

- * SAP Cloud Platform Integration cannot be used for customer-driven integration.
- * Customer-driven integration is operated by SAP.
- * Customer-driven integration requires that the integration is scoped and built based on APIs provided by SAP.
- * Customer-driven integration enables you to achieve maximum speed to value.

NEW QUESTION 58

Which of the following best practices are included in the Order and Contract Management end-to-end solution?

Note: There are 3 correct answers to this question.

- * Intercompany and Sales Order Processing (Domestic and International)
- * Accounts Receivable
- * Accelerated CustomerReturns
- * Stock Handling
- * Advanced Available-to-Promise Processing (aATP)

NEW QUESTION 59

What is the role of the workflow engine in SAP S/4HANA Cloud?

- * To import workflows generated with third-party workflow toolsets
- * To generate alternative, simple workflows from complex, error-prone workflows
- * To run, control, and monitor all workflow-related activities in the system
- * To transform flow charts and graphics into executable workflows

NEW QUESTION 60

How are Order to Cash processes realized?

- * Based on SAP Best Practices
- * By importing the existing processes from traditional SAP ERP systems
- * By refactoring the code used in Procurement and Invoice Collaboration processes
- * Based on add-ons provided by customers from the retail industry

Truly Beneficial For Your SAP Exam: <https://www.dumpsmaterials.com/C-S4CMA-2202-real-torrent.html>