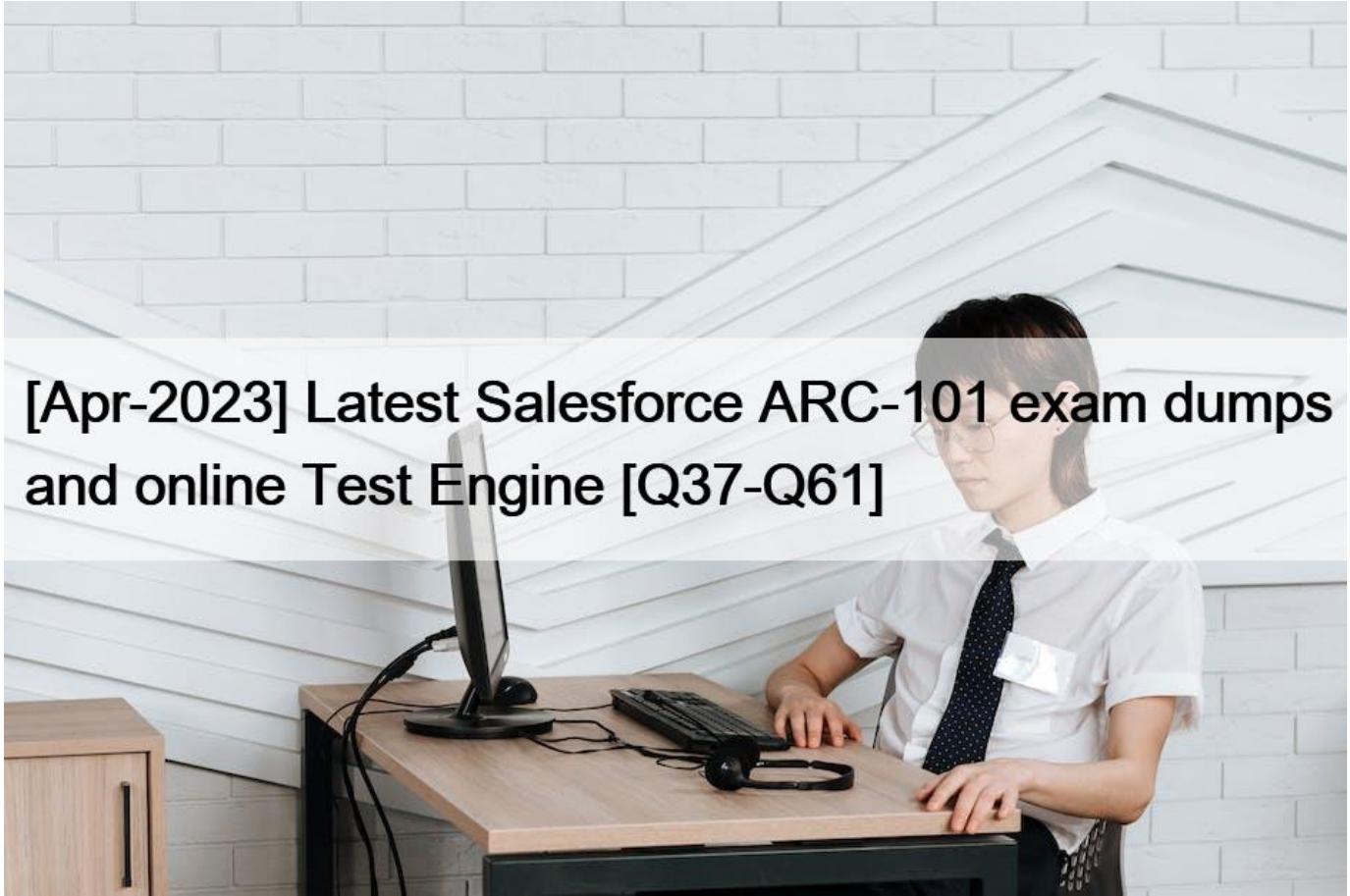


## [Apr-2023 Latest Salesforce ARC-101 exam dumps and online Test Engine [Q37-Q61]



## [Apr-2023] Latest Salesforce ARC-101 exam dumps and online Test Engine [Q37-Q61]

[Apr-2023] Latest Salesforce ARC-101 exam dumps and online Test Engine  
Salesforce ARC-101: Selling Salesforce Architect Products and Solutions

### Salesforce ARC-101 Exam Syllabus Topics:

Topic 1- Understand Use Cases for a Data Virtualization Pattern- Create External Applications Using SOAP API  
Topic 2 - Build Event-Driven Applications Using Streaming API- Understand Use Cases for a Batch Data Synchronization Pattern  
Topic 3- Build Event-Driven Applications Using Platform Events- Explore the Meaning of System Landscape  
Topic 4- Understand When to Use Remote Site Settings- Call External APIs Programmatically Using Callouts  
Topic 5- Integrate Data from an External Data Source Using Salesforce Connect- Encrypt Your Data at Rest Using Salesforce Shield Platform Encryption  
Topic 6- Understand Use Cases for a Request and Reply Pattern- Work with Large Data Volumes Using BULK API  
Topic 7- Build Event-Driven Applications Using Change Data Capture- Understand the Benefits of Using Named Credentials  
Topic 8- Understand Use Cases for a UI Update Based on Data Changes Pattern- Understand the Importance of Integration  
Topic 9- Explore Two-Way Transport Layer Security (TLS)- Call External APIs Declaratively Using External Services

**Q37.** Universal containers is planning to implement Salesforce as their CRM system. Currently they have the following systems

1. Leads are managed in a Marketing System.
2. Sales people use Microsoft Outlook to enter contacts, emails and manage activities.
3. Inventory, Billing and Payments are managed in their ERP system. 4. The proposed CRM system is expected to provide Sales and Support people the ability to have a single view of their customers and manage their contacts, emails and activities in Salesforce CRM.

What should an Integration Consultant consider to support the proposed CRM system strategy?

- \* Plan for migration of customer and sales data across systems on a regular basis to keep them in sync.
- \* Evaluate current and future data and system usage and then identify potential integration requirements to Salesforce.
- \* Explore Out of box Salesforce connectors for integration with ERP, Marketing and Microsoft Outlook systems.
- \* Propose a middleware system that can support interface between systems with Salesforce.

**Q38.** Northern Trail Outfitters needs to use Shield Platform Encryption to encrypt social security numbers in order to meet a business requirement.

Which two considerations should an Integration Architect do prior to the implementation of Shield Platform Encryption?

Choose 2 answers

- \* Encrypt the data using the most current key.
- \* Review shield platform encryption configurations.
- \* Encrypt all the data so that it is secure.
- \* Use Shield Platform Encryption as a user authentication or authorization tool.

**Q39.** A company needs to be able to send data from Salesforce to a home grown system behind a corporate firewall. The data needs to be pushed only one way and doesn't need to be sent in real time. The average volume is 2 million records per day.

What should an integration architect consider when choosing the right option in building the integration between the external system and Salesforce?

- \* Due to high volume of records, number of concurrent requests can hit the limit for the REST API call to external system.
- \* Due to high volume of records, a third party integration tool is required to stage records off platform.
- \* Due to high volume of records, the external system will need to use a BULK API Rest endpoint to connect to salesforce.
- \* Due to high volume of records, salesforce will need to make a REST API call to external system.

**Q40.** Service Agents at Northern Trail Outfitters uses Salesforce to manage cases and B2C Commerce for ordering.

Which integration solution should an architect recommend in order for the service agents to see order history from a B2C Commerce system?

- \* Salesforce B2C Commerce to Service Cloud Connector
- \* A REST API offered by Commerce Platform
- \* Mulesoft Anypoint Platform
- \* REST API offered by Salesforce Platform

[https://help.salesforce.com/articleView?id=icx\\_b2c\\_conversationalcommerce\\_connector.htm&type=5](https://help.salesforce.com/articleView?id=icx_b2c_conversationalcommerce_connector.htm&type=5)

**Q41.** Universal Containers (UC) is a large printing company that sells advertisement banners. The company works with third-party agents on banner initial design concepts. The design files are stored in an on-premise file store that can be accessed by UC internal users and the third party agencies. UC would like to collaborate with the 3rd part agencies on the design files and allow them to be able to view the design files in the community.

The conceptual design files size is 2.5 GB.

Which solution should an integration architect recommend?

- \* Create a lightning component with a Request and Reply integration pattern to allow the community users to download the design files.
  - \* Define an External Data Source and use Salesforce Connect to upload the files to an external object. Link the external object using Indirect lookup.
  - \* Create a custom object to store the file location URL, when community user clicks on the file URL, redirect the user to the on-prem system file location.
  - \* Use Salesforce Files to link the files to Salesforce records and display the record and the files in the community.
- [https://help.salesforce.com/articleView?id=collab\\_files\\_connect\\_share.htm&type=5](https://help.salesforce.com/articleView?id=collab_files_connect_share.htm&type=5)

**Q42.** Universal Containers (UC) owns a variety of cloud-based applications, including Salesforce, alongside several on premise applications. The on-premise applications are protected behind a corporate network with limited outside access to external systems.

UC would like to expose data from the on-premise applications to Salesforce for a more unified user experience. The data should be accessible from Salesforce in real-time.

Which two actions should be recommended to fulfill this system requirement?

Choose 2 answers

- \* Develop an application in Heroku that connects to the on-premise database via an ODBC string and VPC connection.
- \* Develop custom APIs on the company's network that are invocable by Salesforce.
- \* Deploy MuleSoft to the on-premise network and design externally facing APIs to expose the data.
- \* Run a batch job with an ETL tool from an on-premise server to move data to Salesforce.

**Q43.** Northern Trail Outfitters is seeking to improve the performance and security of outbound integrations from Salesforce to on-premise servers.

What should the Architect consider before recommending a solution?

- \* External gateway products in use
- \* A Default gateway restrictions
- \* Considerations for using Deterministic Encryption
- \* Shield Platform Encryption Limitations

**Q44.** An integration architect needs to build a solution that will be using the Streaming API, but the data loss should be minimized, even when the client re-connects every couple of days.

Which two types of Streaming API events should be considered?

Choose 2 answers

- \* Generic Events
- \* Change Data Capture Events
- \* PushTopic Events
- \* High Volume Platform Events

**Q45.** An Architect is required to integrate with an External Data Source via a Named Credential with an Apex callout due to technical constraints.

How is authentication achieved?

- \* Handle authentication with login flows.
- \* Handle authentication in the code.
- \* Connect via Salesforce Connect.
- \* Connect via Communities.

[https://help.salesforce.com/articleView?id=named\\_credentials\\_define.htm&type=5](https://help.salesforce.com/articleView?id=named_credentials_define.htm&type=5)

**Q46.** A company accepts payment requests 24x7. Once they accept a payment request, their service level agreement (SLA) requires them to make sure each payment request is processed by their Payment System. They track payment requests using a globally unique identifier created at the Data Entry Point. Their simplified flow is as shown in the diagram.

They encounter intermittent update errors when two or more processes try to update the same Payment Request record at the same time.

Which two recommendations should an integration architect make to improve their SLA and update conflict handling?

Choose 2 answers

- \* Middleware should coordinate request delivery and payment processing.
- \* Data Entry Point and Middleware should automatically retry requests.
- \* Payment System should process a payment request only once.
- \* Payment System and Middleware should automatically retry requests.

**Q47.** KiA B2C Enterprise Customer has the following use case that involves processing payment from an external payment gateway service in Salesforce.

1. Customer requests Customer Service Representative (CSR) for a Service upgrade.
2. Customer provides credit card details to CSR for payment.
3. CSR submits payment information in Salesforce, and processed in a
4. CSR receives confirmation of payment.
5. CSR upgrades service for customer and confirms Customer.

external payment gateway.

This use case requires the CSR to obtain confirmation of payment before upgrading the service.

The integration with Payment gateway needs to be reliable and monitored for audit purposes.

The payment gateway service is an external RESTful service that the B2C Enterprise Customer has subscribed for.

What should an Integration Architect recommend for this integration?

- \* Build a custom Apex Callout to external Payment gateway service and provide success message to the CSR, the details of callouts and responses are logged for audit purposes.
- \* Use External Services feature to integrate gateway to Salesforce ensuring real-time updates the CSR and support post payment processes.
- \* Make a callout to the payment gateway through ESB supporting error handling and logging for audit purposes.
- \* Platform events allow integration to payment gateway through the exchange of real-time event data, platform events are scalable

and secure.

**Q48.** An Architect is asked to build a solution that allows a service to access Salesforce through the API. What is the first thing the Architect should do?

- \* Create a new user with System Administrator profile.
- \* Authenticate the integration using existing Single Sign-On.
- \* Authenticate the integration using existing Network-Based Security.
- \* Create a special user solely for the integration purposes.

**Q49.** What is the first thing an Integration Architect should validate if a callout from a Lightning Web Component to an external endpoint is failing?

- \* The endpoint domain has been added to Cross-Origin Resource Sharing.
- \* The endpoint URL has been added to Content Security Policies.
- \* The endpoint URL has added been to an outbound firewall rule.
- \* The endpoint URL has been added to Remote Site Settings.

**Q50.** A company is planning on sending orders from Salesforce to a fulfillment system. The integration architect has been asked to plan for the integration.

Which two questions should the integration architect consider?

Choose 2 answers

- \* Can the fulfillment system create new addresses within the Order Create service?
- \* Can the fulfillment system make a callback into Salesforce?
- \* Can the fulfillment system implement a contract-first Outbound Messaging interface?
- \* Is the product catalog data identical at all times in both systems?

<https://www.youtube.com/watch?v=zQncznMLrt4> Contract first interface is important as it can impact integration design in terms of efficiency and collaboration.

**Q51.** A customer is migrating from an old legacy system to Salesforce. As part of the modernization effort, they would like to integrate all existing systems that currently work with their legacy application with Salesforce.

Which three constraints and pain-points should an integration architect consider when choosing the integration pattern/mechanism?

Choose 3 answers

- \* System types & APIs, File systems, Email
- \* Reporting and usability requirements
- \* Multi-language and multi-currency requirement
- \* Error handling mechanisms
- \* Data Volume and Processing volume

**Q52.** Universal Containers is a global financial company that sells financial products and services.

There is a daily scheduled Batch Apex job that generates invoice from a given set of orders.

UC requested building a resilient integration for this batch apex job in case the invoice generation fails.

What should an integration architect recommend to fulfill the requirement?

- \* Build Batch Retry & Error Handling in the Batch Apex Job itself.
- \* Batch Retry & Error Handling report to monitor the error handling.

- \* Build Batch Retry & Error Handling using BatchApexErrorEvent.
- \* Build Batch Retry & Error Handling in the middleware.

**Q53.** Northern Trail Outfitters (NTO) has recently implemented middleware for orchestration of services across platforms. The ERP system being used requires transactions be captured near real time at a REST endpoint initiated in Salesforce when creating an order object. Additionally, the Salesforce team has limited development resources and requires a low code solution.

Which two options will fulfill the use case requirements?

Choose 2 answers

- \* Use Remote Process Invocation fire and forget pattern on insert on the order object using Flow Builder.
- \* Implement a Workflow Rule with Outbound Messaging to send SOAP messages to the designated endpoint.
- \* Implement Change Data Capture on the order object and leverage the replay Id in the middleware solution.
- \* Use a process builder to create a Platform Event, selecting the record type as the Platform Event Name on insert of record.

**Q54.** An Integration Architect has built a solution using REST API, updating Account, Contact, and other related information. The data volumes have increased, resulting in higher API calls consumed, and some days the limits are exceeded. A decision was made to decrease the number of API calls using bulk updates. The customer prefers to continue using REST API to avoid architecture changes.

Which REST API composite resources should the Integration Architect use to allow up to 200 records in one API call?

- \* SObject Collections
- \* SObject Tree
- \* Batch
- \* Composite

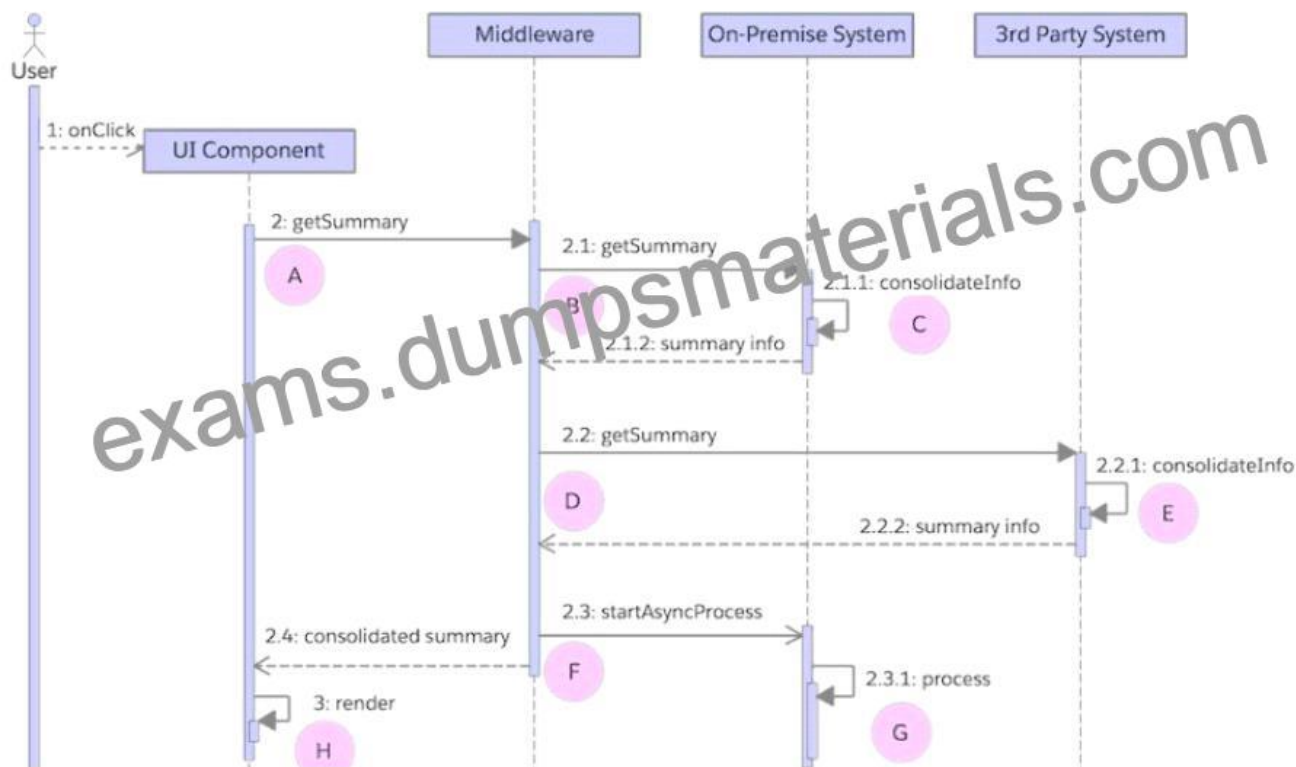
[https://developer.salesforce.com/docs/atlas.en-us.api\\_rest.meta/api\\_rest/resources\\_composite\\_sobject\\_tree.htm](https://developer.salesforce.com/docs/atlas.en-us.api_rest.meta/api_rest/resources_composite_sobject_tree.htm)

**Q55.** Which two requirements should the Salesforce Community Cloud support for self-registration and SSO?

Choose 2 answers

- \* SAML SSO and Registration Handler
- \* OpenId Connect Authentication Provider and Registration Handler
- \* SAML SSO and just-in-time provisioning
- \* OpenId Connect Authentication Provider and just-in-time provisioning

**Q56.** A company's cloud-based single page application consolidates data local to the application with data from on premise and 3rd party systems. The diagram below typifies the application's combined use of synchronous and asynchronous calls.



The company wants to use the average response time of its application's user interface as a basis for certain alerts. For this purpose, the following occurs:

1. Log every call's start and finish date and time to a central analytics data store.
2. Compute response time uniformly as the difference between the start and finish date and time - A to H in the diagram.

Which computation represents the end-to-end response time from the user's perspective?

- \* Sum of A to H
- \* Sum of A to F
- \* Sum of A, G, and H
- \* Sum of A and H

**Q57.** A US business-to-consumer (B2C) company is planning to expand to Latin America. They project an initial Latin American customer base of about one million, and a growth rate of around 10% every year for the next 5 years. They anticipate privacy and data protection requirements similar to those in the European Union to come into effect during this time. Their initial analysis indicates that key personal data is stored in the following systems:

1. Legacy mainframe systems that have remained untouched for years and are due to be decommissioned.
2. Salesforce Commerce Cloud Service Cloud, Marketing Cloud, and Community Cloud.
3. The company's CIO tasked the integration architect with ensuring that they can completely delete their Latin American customer's personal data on demand.

Which three requirements should the integration architect consider?

Choose 3 answers

- \* Manual steps and procedures that may be necessary.
- \* Impact of deleted records on system functionality.
- \* Ability to delete personal data in every system.
- \* Feasibility to restore deleted records when needed.
- \* Ability to provide a 360-degree view of the customer.

**Q58.** Universal Containers (UC) is a leading provider of management training globally, UC embarked on a Salesforce transformation journey to allow students to register for courses in the Salesforce community. UC has a learning system that masters all courses and student registration.

UC requested a near real-time feed of student registration from Salesforce to the learning system. The integration architect recommends using Salesforce event.

Which API should be used for the Salesforce platform event solution?

- \* Tooling API
- \* Streaming API
- \* O REST AP
- \* SOAP API

**Q59.** A Salesforce customer is planning to roll out Salesforce for all their Sales and Service staff.

Senior Management has requested that monitoring is to be in pla for Operations to notify any degradation in Salesforce performance.

How should an integration consultant implement monitoring?

- \* Use Salesforce limits API to capture current API usage and configure alerts for monitoring.
- \* Use APIEVENT to track all user initiated API calls through SOAP, REST or BULK APIs.
- \* Identify critical business processes and establish automation to monitor performance against established benchmarks.
- \* Request Salesforce to monitor the Salesforce instance and notify when there is degradation in performance.

**Q60.** Universal Containers (UC) is currently managing a custom monolithic web service that runs on an on-premise server.

This monolithic web service is responsible for Point-to-Point (P2P) integrations between:

1. Salesforce and a legacy billing application
2. Salesforce and a cloud-based Enterprise Resource Planning application
3. Salesforce and a data lake.

UC has found that the tight interdependencies between systems is causing integrations to fail.

What should an architect recommend to decouple the systems and improve performance of the integrations?

- \* Re-write and optimize the current web service to be more efficient.
- \* Leverage modular design by breaking up the web service into smaller pieces for a microservice architecture.
- \* Use the Salesforce Bulk API when integrating back into Salesforce.
- \* Move the custom monolithic web service from on-premise to a cloud provider.



**Q61.** Universal Containers (UC) is a global financial company. UC support agents would like to open bank accounts on the spot for a customer who is inquiring ab UC products.

During opening the bank account process, the agents execute credit checks for the customers through external agencies. At a given time, up to 30 concurrent rewill be using the service for performing credit checks for customers.

What error handling mechanisms should be built to display an error to the agent when the credit verification process failed?

- \* In case the verification process is down, Use mock service to send the response to the agent.
- \* Handle verification process error in the Verification Webservice API in case there is a connection issue to the Webservice if it responds with an error.
- \* Handle integration errors in the middleware in case the verification process is down, then the middleware should retry processing the request multiple times.
- \* In case the verification process is down, use fire and forget mechanism instead of request and reply to allow the agent to get the response back when the service is bar online.

**New 2023 ARC-101 Test Tutorial (Updated 108 Questions):** <https://www.dumpsmaterials.com/ARC-101-real-torrent.html>